



UNiSTEEL ENGINEERING WORKS[®]

Manufacturer of Civil Construction Machineries

Concrete Solution for Concrete Lining

RCP 750[®] CONCRETE PAVER



RCP 750[®] CONCRETE PAVER



PVR 1001[®] CONCRETE PAVER



Corporate Profile

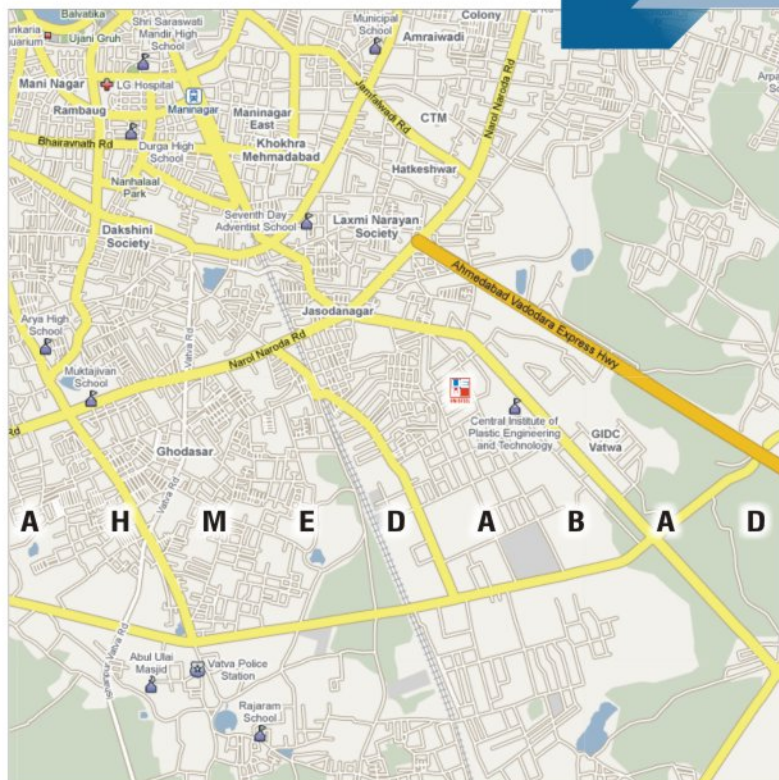
It was the single-minded vision and foresightedness of Late Shree Vallabhbhai J. Surelia, that gave birth to the well-acclaimed civil construction machinery manufacturer like Concrete Paver machine for Canal, Road, Airport Taxiway & Reservoir widely known as a Unisteel Engineering Works (UEW) today. And in the years that have gone by, UNiSTEEL story's has been one that personifies technical precision, quality control, expert know-how and unrelenting dedication. It is now wonder then that in just a few years, UNiSTEEL has reached the pinnacle of its industry as a name to reckon with.

UNiSTEEL is one of India's leading manufacturers of civil construction machineries. The company's extensive range of products comprises Concrete Paver Machines for Canals & Reservoirs and Concrete Paver Machines for Airport Taxiway and Roads. The machines manufactured by UNiSTEEL guarantee optimum performance and efficiency, fulfilling client expectations in every stage from development to execution.



Located in the industrial hub of Western India, Ahmedabad, UNiSTEEL boasts of state-of-the-art manufacturing facilities that comprise sophisticated Testing, Inspection and R&D Departments to complement the company's proficient team of engineers and technicians. The company stands committed to ensure that the wastage of time and money is kept at a minimum. 'Doing it right the first time' is an attitude that is innate in every process, which translates into optimum utilization of man and machine. Furthermore, the basic denominator of every function carried out at UNiSTEEL is always quality.

UNiSTEEL is ISO/JAS-ANZ as well as D&B certified. The company adheres to all statutory safety norms that regulate the manufacturing and operating of heavy concrete machinery.





Our unforgettable “Bapuji”
Shree Vallabhnbhai J. Surelia



RCP 750® CONCRETE PAVER FOR CANAL & RESERVOIR



- ◆ High precision cylinder finisher for concrete slabs such as Streets, Parking, Factory floors, Bridges, Airports, Tennis Courts, Canal, Reservoir etc.
- ◆ It can finish a width from 3.5 mts. to 20 mts. (It is a custom design paver)
- ◆ Machine can finish up to 180 sq. meter/hour at suitable site condition.
- ◆ Light weight construction for easy erection and transportation from site to site.
- ◆ The special Under carriage consists of a spreader auger to spread the concrete to level, The finishing Cylinder to compact and finish the concrete to the grade.
- ◆ Finishing roll bracket is equipped with vibrator.
- ◆ Machine can be used alternatively for bed and slope finishing.
- ◆ Special arrangement is made for PVC INSERTER, which can insert PVC longitudinally as well as vertically, and also Groove Cutter arrangement is made, which ever you may require.





RCP 750[®] CONCRETE PAVER FOR CANAL & RESERVOIR

SPECIAL FEATURES

- ◆ The frame structure is light in weight and therefore very easy for transport and erection.
- ◆ The frames are available in the lengths of 4feet; 8feet and 12feet. These are pin bolted together according to the size of the slab width.
- ◆ RCP-750[®] can be incorporated in use for a working width between 3mtr to 20mtrs.
- ◆ The paving is carried out with a Vibrating-finishing drum of 4 feet in length and 10.7 inches (272 mm) in diameter.
- ◆ The finishing drum is equipped with vibrator to achieve better finishing.
- ◆ 4 no's of mechanically adjustable jacks are provided for maintaining the machine level.
- ◆ The forward and reverse motion of the machine is controlled by hydraulically operated bogie.
- ◆ The finishing drum bracket has an ability to swivel at an angle of 20° in either direction to accommodate harsh mix for a quality finish.
- ◆ Leveling screws are used to level the rails on which the machine moves to maintain the smoothness of surface and to avoid irregular paving
- ◆ Special Curvature which can be used in all slope ratio with nominal extra cost, you have only to change Pinch Rail and ready to work for another slope ratio, You can do this without dismantling the paver.

FULL SECTION PAVER - FSP 750

FULL SECTION PAVER are also supplied, having bed width 0.5 meter to 5 meters and slope length from 2 Mts to 6 Mts.





RCP 750[®] CONCRETE PAVER FOR CANAL & RESERVOIR



TECHNICAL SPECIFICATION

Prime Mover	10HP 1440-RPM for fix Console 10HP 1440-RPM for under carriage
Fix Console	This Hydraulic console controls the forward and reverse movement of the under carriage and the travel bogie by means of hydraulic motors
Under Carriage/ Finisher Assembly	Under Carriage accommodates the most critical components of the machine. It encompasses the vibratory finishing drum, Spreader Auger. The Under Carriage travels with a speed 30mtrs/min
Vibratory Finishing Drum	The finishing drum is 4 feet in length and 10.7 inches (272 mm) in diameter. It rotates at a speed of 195rpm. The finishing drum vibrates at 1500 vpm. This Drum is precisely balance with the help of computerized balancing system to obtain quality finish.
Spreader Auger	The Auger is welded with hard faced welding to obtain maximum life. The auger is designed to work in the direction of travel movement of the machine.
Hydraulic Oil Capacities	Fix console: 110 liters Under carriage: 140 liters
Traction System	Traction Drive: Two hydraulically driven flanged wheels bogie. Traction Speed: Up to 52 feet/min (15.86 mtrs/min).



RCP 750[®] CONCRETE PAVER FOR CANAL & RESERVOIR



WORK UNDER RESERVOIR



WORKING AT AIRPORT



GIVE US ANY SITE CONDITION



NORMAL CANAL



UNISTEEL PAVER FINISHING



CLOSER VIEW



RCP 750® CONCRETE PAVER FOR ROAD / AIRPORT



- ◆ High precision cylinder finisher pavement for concrete slabs such as Streets, Parking, Factory floors, Bridges, Airports, Tennis Courts etc.
- ◆ Finish width up to 20 mts can be obtained.
- ◆ Machine can finish up to 150 sq meter/hour at suitable site condition.
- ◆ Light weight construction for easy erection and transportation from site to site
- ◆ The special Under carriage consists of a spreader augar to spread the concrete to level, The finishing Cylinder to compact and finish the concrete to the grade
- ◆ Finishing roll bracket is equipped with vibrator
- ◆ Works to any slab height
- ◆ When the road paving works special arrangement is made to create camber on road.
- ◆ UNiSTEEL RCP-750® PAVER MACHINE is also equipped with hydraulic needle vibrator and it inserts automatically in fresh concrete one after other, this will give vibrating deep in slab height creating a homogeneous bounding of slab without air gap in between the concrete slab. This function is not in any other method. One should insert manually needle vibrator in any other method of paving except slip-form method. In manual method it is not possible for man to get each and every portion of concrete cannot be achieve. *(Optional)*
- ◆ Toeing arrangement of UNiSTEEL RCP-750® PAVER MACHINE is very easy to attach, simply fix bolts and it is ready for toeing. There is no need to take any part of paver away for fixing the toeing arrangement. In less time you can sift the paver from one end to another. *(Optional)*



RCP 750[®] CONCRETE PAVER FOR ROAD / AIRPORT

SPECIAL FEATURES

- ◆ The frame structure is light in weight and therefore very easy for transport and erection.
- ◆ The frames are available in the lengths of 4 feet, 8 feet and 12 feet. These are bolted together according to the size of the slab width.
- ◆ RCP-750[®] can be incorporated in use for a working width between 3 mtrs to 20 mtrs.
- ◆ Hydraulically operated needle vibrators are provided on the mobile assembly to stir the concrete to remove any air bubbles if present in the mix and thus reduce the porosity. Due to Needle Vibrator may struck side partition you have to do 250 mm manually on both side. *(Optional)*
- ◆ Hydraulic Needle vibrators vibrate with a frequency 10,500 vpm. *(Optional)*
- ◆ The paving is carried out with a Vibrating-finishing drum of 4 feet in length and 10.7 inches (272 mm) in diameter.
- ◆ The finishing drum is equipped with vibrator to achieve better finishing.
- ◆ Crowning arrangement is provided for cambering the surface of the road.
- ◆ 4 no's of mechanically adjustable jacks are provided for maintaining the machine level.
- ◆ The forward and reverse motion of the machine is controlled by hydraulically operated bogie.
- ◆ The finishing drum bracket has an ability to swivel at an angle of 20° in either direction to accommodate harsh mix for a quality finish.
- ◆ Leveling screws are used to level the rails on which the machine moves to maintain the smoothness of surface and to avoid irregular paving.





RCP 750[®] CONCRETE PAVER FOR ROAD / AIRPORT

TECHNICAL SPECIFICATION

PRIME MOVER: with Needle Vibrator	10HP 1440-RPM for fix Console. 20HP 1440-RPM for under carriage.
PRIME MOVER: without Needle Vibrator	10HP 1440-RPM for fix Console. 10HP 1440-RPM for under carriage.
Fix Console	This Hydraulic console controls the forward and reverse movement of the under carriage and the travel bogie by means of hydraulic motors.
Under Carriage/Finisher Assembly	Under Carriage accommodates the most critical components of the machine. It encompasses the vibratory finishing drum, Needle vibrators, Spreader Auger. The Under Carriage travels with a speed 30 mtrs/min.
Vibratory Finishing Drum	The finishing drum is 4 feet in length and 10.7 inches (272 mm) in diameter. It rotates at a speed of 195 rpm. The finishing drum vibrates at 1500 vpm. This Drum is precisely balance with the help of computerized balancing system to obtain quality finish.
Spreader Auger	The Auger is welded with hard faced welding to obtain maximum life. The auger is designed to work in the direction of travel movement of the machine.
Angular Needle Vibrators (Optional)	Needle vibrators with 10,500 vpm. These dual vibrators are designed with an angular twist in the opposite directions. These vibrators operate alternately by penetrating in to the concrete depth with the direction of twist along the motion of the under carriage.
Hydraulic Oil Capacities	Fix console: 110 liters Under carriage: 140 liters
Traction System	Traction Drive: Two hydraulically driven flanged wheels bogie. Traction Speed: Up to 52 feet/min (15.86 mtrs/min)



RCP 750[®] CONCRETE PAVER FOR ROAD / AIRPORT



VIEW AFTER TEXTURING



SIDE SHUTTERING ARRANGEMENT



WORKING ONLINE AT AIRPORT



WORKING ON ROAD



NEEDLE VIBRATOR ARRANGEMENT



WORKING ON ROAD



PVR 1001[®] CONCRETE PAVER FOR CANAL / RESERVOIR

MASS CONCRETE PAVING



- ◆ Heavy duty paver for concrete slabs such as Airport, Canal, reservoir, mass concrete paving.
- ◆ Finishing width up to 28 meters and more.
- ◆ Machine can finish up to 180 Mts sq/hour.
- ◆ The special Under carriage consists of a spreader augar, spreads the concrete to level, The finishing Cylinder to compact and finish the concrete to the grade.
- ◆ Machine can be used alternatively for bed and slope finishing.
- ◆ Special arrangement is made for PVC INSERTER, which can inserter PVC longitudinally as well as vertically. And also Groove Cutter arrangement is made, which ever you may require.



Working at the world's largest Narmada canal



PVR 1001[®] CONCRETE PAVER FOR CANAL / RESERVOIR

MASS CONCRETE PAVING

TECHNICAL SPECIFICATION

Frame Construction	Heavy duty Frames are made from welded steel panels in standard length of 3.66 Mts. and 2.5 Mts.
Length Variability	Frames are pin bolted with each other for quick connection. The total length varies accordingly from 13.48 Mts. to 22 Mts. Greater length can be supplied.
Prime Mover	15 HP 1440 RPM, Electric Motor for Fix console 15 HP 1440 RPM, Electric Motor for Under carriage
Hydraulic Oil Capacity	Fix console: 180 liters. Under carriage: 102 liters.
Vibrating Finishing Assembly	Cylinder: 10 inch diameter, 6 feet long.
Augar	10 inch diameter
Optional Accessories	Trimmer attachment for slop of canal

Technical specifications are subject to change without prior notice



Working at the world's largest Narmada canal



JAS-ANZ



An ISO 9001:2000
Certified Company

ISO/JAS-ANZ (ISO 9001:2000) Certification



UNiSTEEL ENGINEERING WORKS™
Manufacturer of Civil Construction Machineries

Quality Policy

Unisteel Engineering Works offers products that consistently meet the customers' requirements. Our emphasis is on fulfilling our customers' expectations to the best of our abilities. UNiSTEEL is committed to continually improve the effectiveness of our Quality Management System & also believes that teamwork leads to achievements.

The objective of UNiSTEEL shall be defined & reviewed. We strive for excellence & our guiding values are recognition to the individual, commitment & credibility. The policy is communicated & understood by all within the organization & reviewed for continuing suitability.

Managing Partner

Ahmedabad • UEW/ISO/QP-01

D&B Certificate

NSIC
ISO 9001 : 2000



Decide with Confidence

This is to certify that
Unisteel Engineering Works
Plot No. 79/B, Phase - I, GIDC Industrial Estate, F Road,
Opp. Water Tank, Vatva, Ahmedabad - 382 445, Gujarat
is now part of the
Dun & Bradstreet Global Database
and has been assigned the
D&B D-U-N-S® Number: 91-813-6417

For **Dun & Bradstreet Information Services India Pvt Ltd**

Authorized Signatory

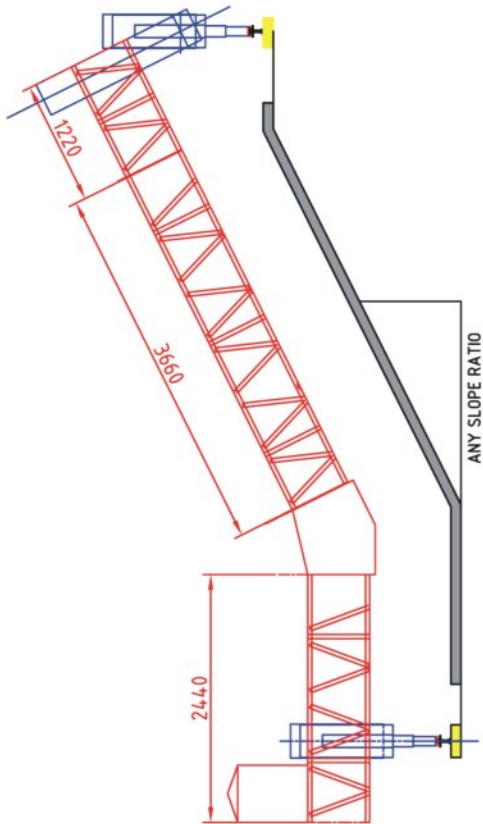
February 11, 2008

"The fact that this business is registered in the D&B database should not be construed as suggesting that credit or any other financial or business transaction should be approved, denied, restricted or delayed. It only signifies that there is sufficient information in the database to assign a D&B D-U-N-S® Number."

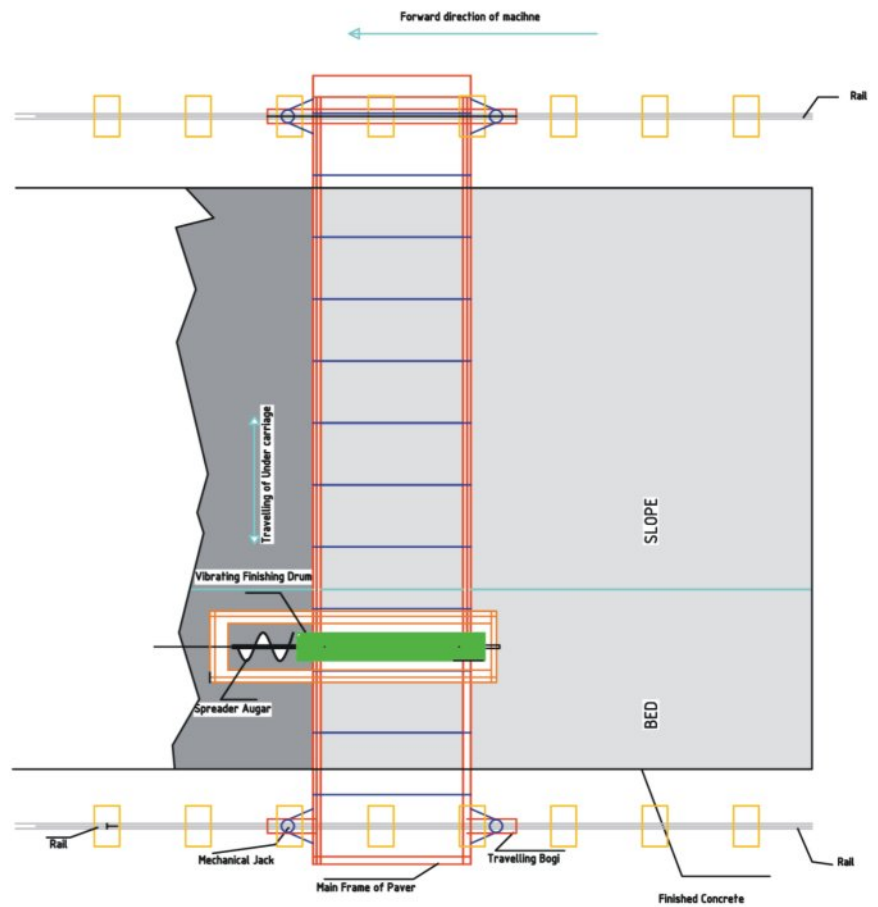
D&B D-U-N-S® Number is a registered number of Dun & Bradstreet Corporation, USA.

RCP 750[®] CONCRETE PAVER FOR CANAL & RESERVOIR

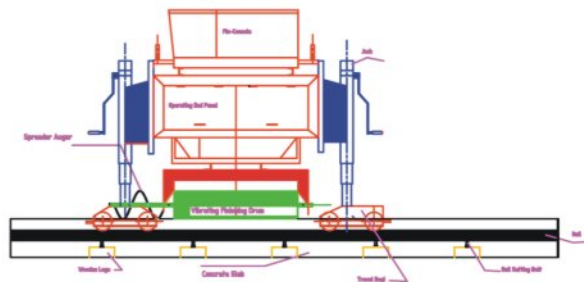
FRONT VIEW



TOP VIEW



CROSS SECTION



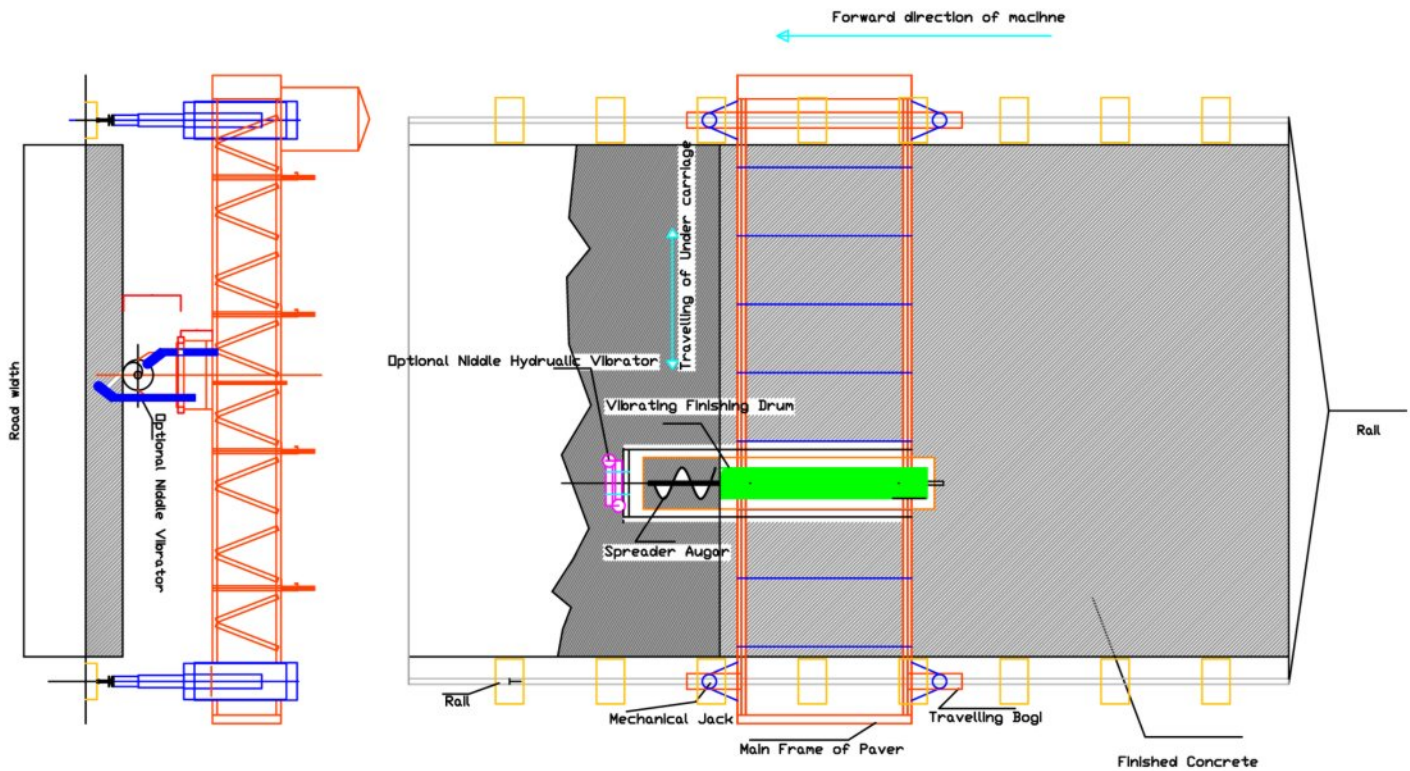
Detail line diagram of working condition



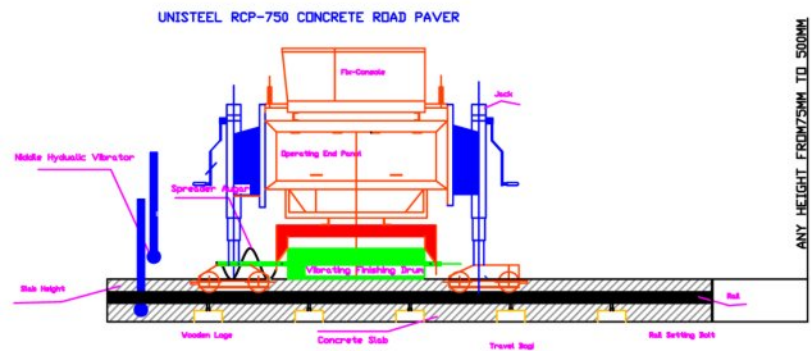
RCP 750[®] CONCRETE PAVER FOR ROAD / AIRPORT

FRONT VIEW

TOP VIEW

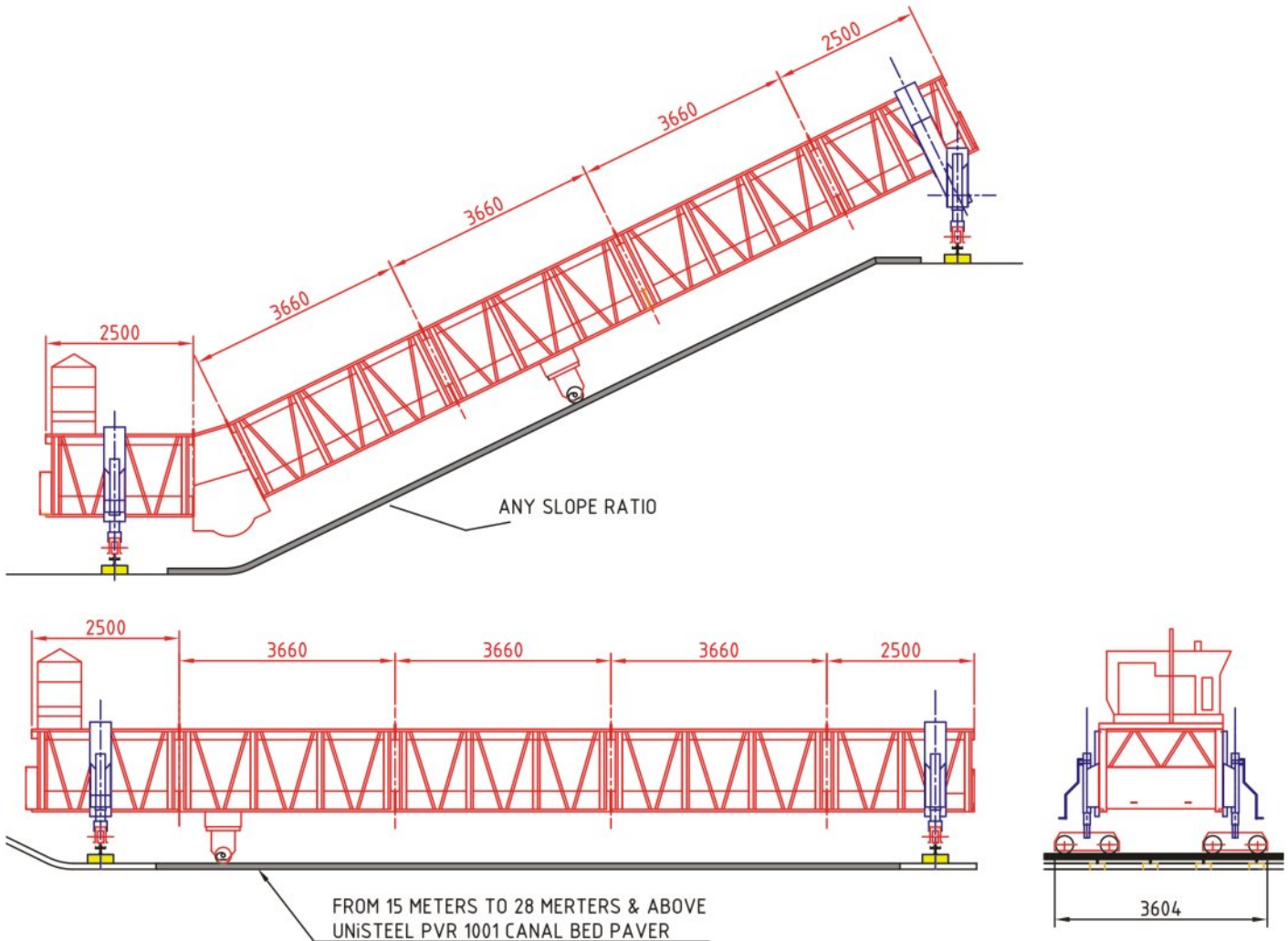


CROSS SECTION



Detail line diagram of working condition

PVR 1001[®] CONCRETE PAVER FOR CANAL / RESERVOIR



Detail line diagram of working condition



UNISTEEL ENGINEERING WORKS®

Manufacturer of Civil Construction Machineries

Plot 79/B, Phase-1, "F" Road, Opp. Water tank, G.I.D.C., Vatva
Ahmedabad 382 445. Gujarat, INDIA.

Phone: 0091 79 2589 5111/ 5546, Fax: 0091 79 2589 5553

E-mail: unisteel@unisteel.net, unisteel@india.com

Web: unisteel.net, unisteel.in, unisteelpaver.com, concretepaver.in, unisteel.org