

# SRCP 750 CONCRETE ELECTRONIC SENSOR PAVER



- + High precision cylinder finisher for concrete slabs such as Streets, Parking, Factory floors, Bridges, Airports, Tennis Courts, Canal, Reservoir etc.
- + It can finish a width from 3.5 mtrs. To 20 mtrs. ( It is a custom design paver )
- + Machine can finish a width up to 150 Sq. Meter/hour at suitable site condition.
- + The special under carriage consists of a spreader extra length auger to spread the concrete to level, the finishing cylinder to compact and finish the concrete to the grade.
- + Finishing roll bracket is equipped with vibrator.
- + Heavy Duty Track Chain, Heavy Duty Hydraulic Jacks & Moba (Germany) Make Electronic Sensor.

# SRCP 750 CONCRETE ELECTRONIC SENSOR PAVER

## TECHNICAL SPECIFICATION\*

|                                      |   |
|--------------------------------------|---|
| PRIME MOVER: With Needle Vibrator    | 15HP 1440-RPM for Fix Console.<br>10HP 1440-RPM for under carriage  |
| PRIME MOVER: Without Needle Vibrator | 15HP 1440-RPM for Fix Console.<br>7.5HP 1440-RPM for under carriage   |
| Fix Console                          | This hydraulic console controls the forward and reverse movement of the under carriage and the travel track chain by means of hydraulic motors.   |
| Under Carriage/Finisher Assembly     | Under Carriage accommodates the most critical components of the machine. It encompasses the vibratory finishing drum, Spreader Auger.<br>Optional:- Hydraulic Needle Vibrators<br><br>The Under Carriage travels with a speed 30 meters/ minute.            |
| Vibratory Finishing Drum             | The finishing drum is 4 feet length and 10.7 inches (272mm) in diameter. It rotates at a speed of 195 rpm. The finishing drum vibrates at 1500 vpm. This drum is precisely balance with the help of computerized balancing system to obtain quality finish. |
| Spreader Auger                       | The Auger is welded with hard faced welding to obtain maximum life. The auger is designed to work in the direction of travel movement of the machine.   |
| Traction System                      | Heavy duty hydraulically driven Track Chain.  |
| Sensor Gradation                     | Moba ( Germany ) Make Electronic Sensor system to obtain maximum accuracy.  |
| Jack System                          | Heavy duty hydraulic jack system.   |
| Hydraulic Oil Capacities             | Fix console: 110 Liters.<br>Under carriage: 140 Liters.   |

\*Technical specification subject to change without prior notice.



# SRCP 750 CONCRETE ELECTRONIC SENSOR PAVER



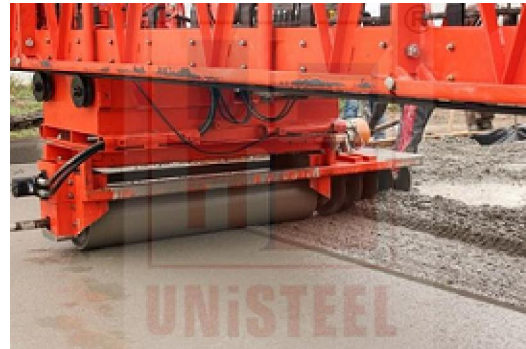
**BACK VIEW AFTER FINISHING**



**TRACK CHAIN**



**VIEW AFTER FINISHING**



**VIEW ON WORKING**



**MOBA GRADE & STAIRING SENSOR**



**HEAVY DUTY HYDRAULIC JACK**